

**X1215/16** (ABOVE SERIAL NUMBER 2000)

**Cartridge Disk Drive Unit**  
**Vol. X: Installation**



**Data  
Systems**

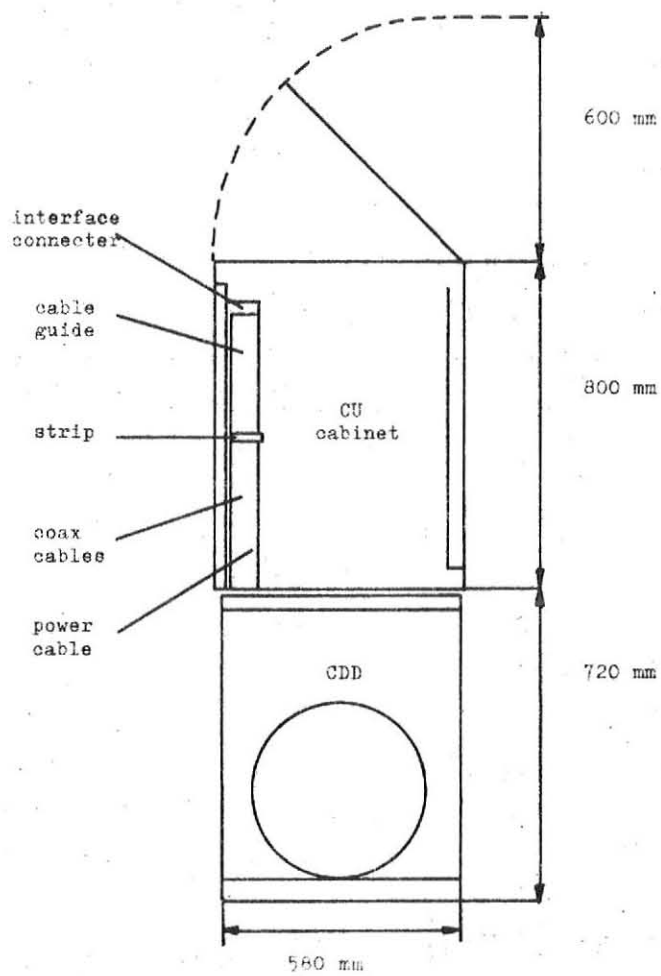


Figure 10-1 SPACE ALLOCATION

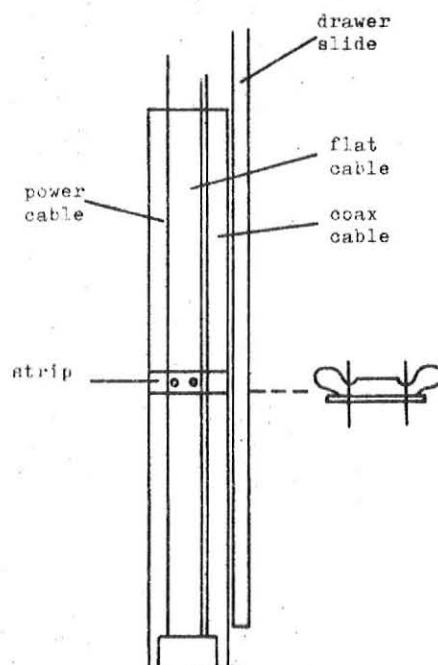


Figure 10-2 CABLE CONNECTIONS

### 1.1 SPACE LOCATION (figure 10-1)

One CCD mounted in a rack requires a floor area of approximately 600 x 800 mm, when the CCD is mounted on drawing slides an additional 750 mm service area to the front and 650 mm to the rear of the unit should be provided.

### 1.2 MOUNTING IN THE RACK

1. Pull out the drawer slides.
2. Lift the unit on to the four bolts mounted on the drawer slides.
3. Fasten the unit with four nuts (6 mm).
4. Remove the interface connector from the dummy plate.
5. Fasten the interface cable guide provided to the left drawer slide.
6. Fasten the interface connector to the cable guide.
7. Fasten the interface cable and power cable to the cable guide with the strip provided.
8. Remove the dummy interface cable guide.

### 1.3 INTERFACE CONNECTIONS (figure 10-2)

Jackscrews on the interface connection cable must be gradually tightened with a screwdriver or damage may result.

1. Refer to the figures 10-2 and 10-3, and install the interface cable.
2. Connect the cable between CU and the device.  
This cable is put in the connector on the right side, viewed from the rear of the rack.  
Interface cable and power cable must be fastened as shown in figure 10-2.

### 1.4 POWER CONNECTION (see fig. 10-2 and 10-3)

The power cable for the CDD originates at the rear of the unit.  
(Hirschmann connector).

- 1) Connect the 1 phase 220 V power cable at the connector on the rear of the unit.
- 2) Fasten this cable to left post of the rack, viewed from the rear (see fig. 10-3).
- 3) Connect the power cable to the terminal block (220 V) located at the bottom of the CU rack.
- 4) Don't connect the shield of the power cable to any point on the rack.

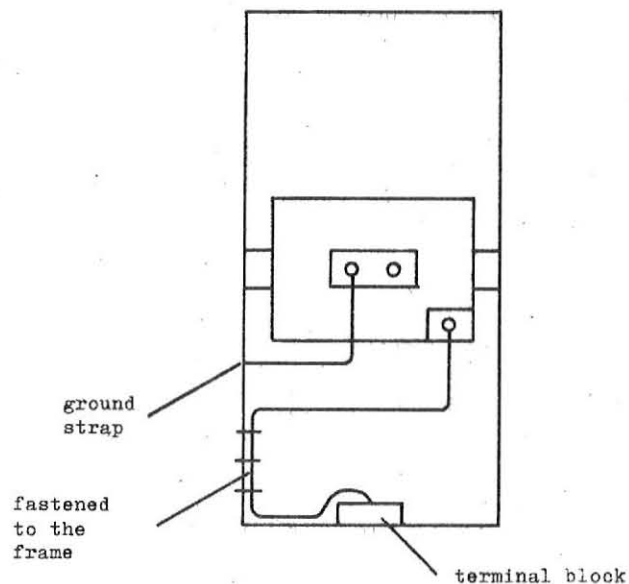


Fig. 10-4 REAR VIEW OF THE CABINET

### 1.5 GROUND CONNECTIONS (figure 10-3)

1. Connect the unit at the rear side with a ground strap to the rack or the frame. The length of the strap is about 100 cm.

1.6 INPUT POWER REQUIREMENTS

The CCD requires an input source capable of supplying 220 V + 10%, - 15%. 50 Hz  $\pm$  1%.

Primary 220 V AC 1 phase

VA cos 0,7 to 0,8 (operating)

VA cos 0,7 to 0,8 (pack motor off)

2,6A/phase surge current

Heat dissipation 500 Watt.

This procedure should be used to make the first power application to the C.D.D. The procedure assumes that the preceding procedures and requirements of this section have been performed and satisfied. Instructions are given for the C.D.D. only.

1. Remove the four crosshead screws of the rear cover, remove the two crosshead screws of the front cover and disconnect the transport lock string of the carriage.
2. Check that all plugs and logic cards are firmly seated in their connectors.
3. Check that all heads in retracted position are retired by the head loading cam block.
4. Note the count of the elapsed time meter.
5. Make sure that the power cable is connected to the correct external power source, see installation 1.6.
6. If the external AC power to the device is protected by a main switch, set the mainpower switch to ON. Turn on the C.D.D. The power on switch is located on the rear of the unit.
7. Place a cartridge on the spindle, start and stop immediately.
8. Repeat step 7 about 5 times, so that the cleaning cycle will run a few times.
9. When the disk pack has achieved operational speed the brushes are returned to a position clear of the disk pack. The voice coil system drives the carriage to load the Read/Write heads. When the heads are loaded, on the operators panel, the unit ready (UR) indicator lights and the heads stay at CYL. 000.
10. With the mainpower OFF, install a CE disk pack. Remove the WC (1A24) card and replace with the CE write disable card. Switch on the mainpower, start pack motor and when the heads are loaded wait about 2 hours and precede as described in volume VII, chapter 3.6 of the manual.
11. Stop spindle motor.
12. Switch off the mainpower.
13. Fasten the front and rear cover.



**X1215/16** (ABOVE SERIAL NUMBER 2000)

**Cartridge Disk Drive Unit  
Vol. XI: Unpacking and  
Packing**



**Data  
Systems**

During uncrating; care must be taken so that tools being used do not inflict damage to any assembly.  
As a CDD is uncrated, inspect it for possible shipping damage.  
All claims resulting from this type of damage should be promptly filed with the carrier involved.  
If a claim is filed for damages, save the original crating materials.  
Most crating materials will be re-usable if reasonable care is taken in uncrating.  
Uncrate and inspect the CDD as outlined in the following chapters.  
Let the uncrated unit acclimate in the computerroom for 2 hours before operating.



The CDD is transported on a wooden pallet designed for handling by a fork-lift truck. The fork width must be set to at least 75 cm when inserted from the side. It is important that the mechanical shocks be kept to a minimum during transport.

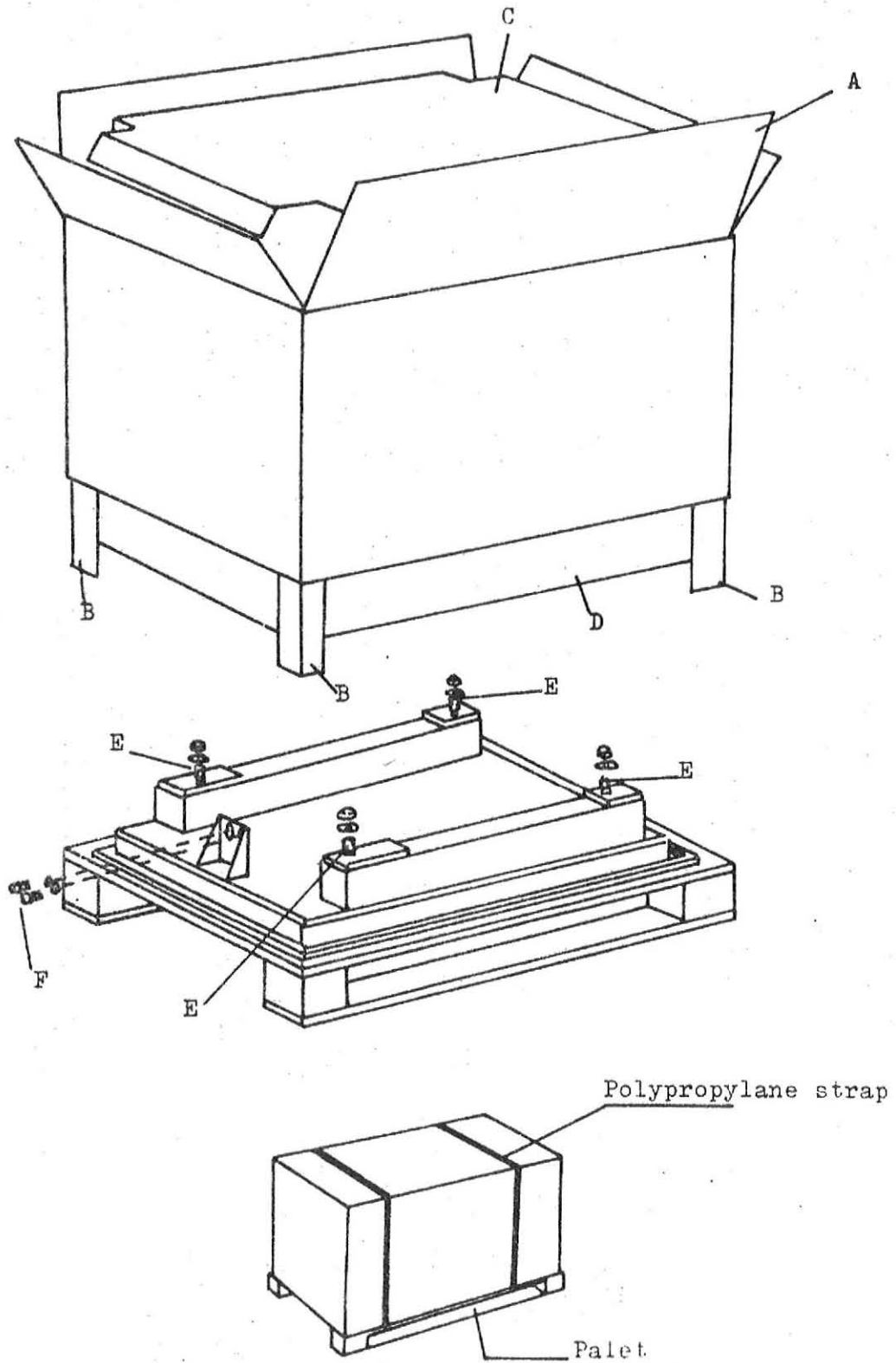


Fig. 11-1 UNIT STORAGE

### 3.1 PACKING (fig. 11-1)

- 1) Remove the 4 crosshead screws of the rear cover and the 2 crosshead screws of the front cover.
- 2) Put the plastic cover on the pallet over the 4 bolts.
- 3) Lift the unit on the pallet.
- 4) Fasten the unit with 4 nuts. (E)
- 5) Fasten the front and rear cover.
- 6) Close the plastic cover with adhesive tape.
- 7) Put over the cardboard sleeve. (D)
- 8) Put over the cardboard box. (A)
- 9) Put in the cardboard on each corner. (B)
- 10) Put on the cardboard cover. (C)
- 11) Close the cardboard box.
- 12) Pass the polypropylene straps under the top surface of the pallet. Pass the straps over the box top and bring the ends of each strap together (see also unpacking).

### 3.2 UNPACKING (fig. 11-1)

1. Remove the two polypropyl straps securing the protective covers.
2. Remove the corrugated cardboard box (A) by lifting it.
3. The corrugated cardboards (B) on each corner are released, so remove them.
4. Remove the second corrugated cardboard cover (C) by lifting it.
5. Remove the corrugated cardboard sleeve (D)
6. Open the plastic cover.
7. Remove the 4 crosshead screws of the rear cover and the 2 crosshead screws of the front cover.
8. Remove both covers.
9. Remove 4 fastening nuts (E) at both sides and the 2 hex screws (F) at the rear of the unit with which the unit is fixed on the pallet.
10. Lift the unit from the pallet and insert carefully in the rack.

**Note:** It is possible to re-use the packing materials for transportation, in which case they need a dry storage area.

